

HOLE NO. 10
PAGE 1

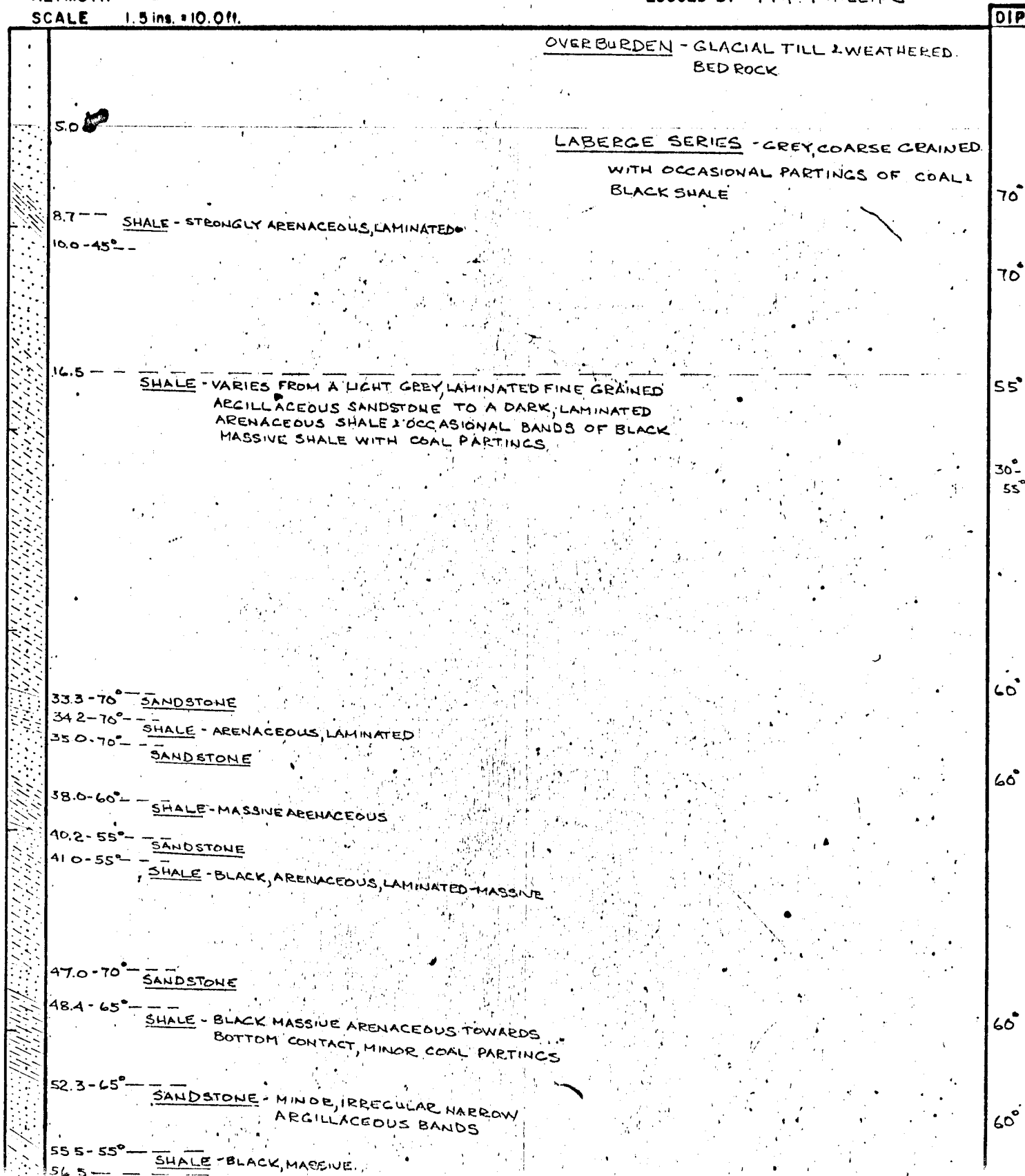
DRILL HOLE LOG

ARJAY KIRKER RESOURCES LTD.

NORDENSKIOLD COAL AREA

COORDINATES 22,321,498.55 N ; -189,921.8 E
 ELEVATION 2,558.7
 DIP -50°
 AZIMUTH 040°
 SCALE 1.5 ins. = 10.0 ft.

CORE SIZE HQ 0-600 FT
 HOLE STARTED 27, AUGUST, 1972
 HOLE COMPLETED 6 SEPTEMBER, 1972
 LOGGED BY M.P. PHILLIPS



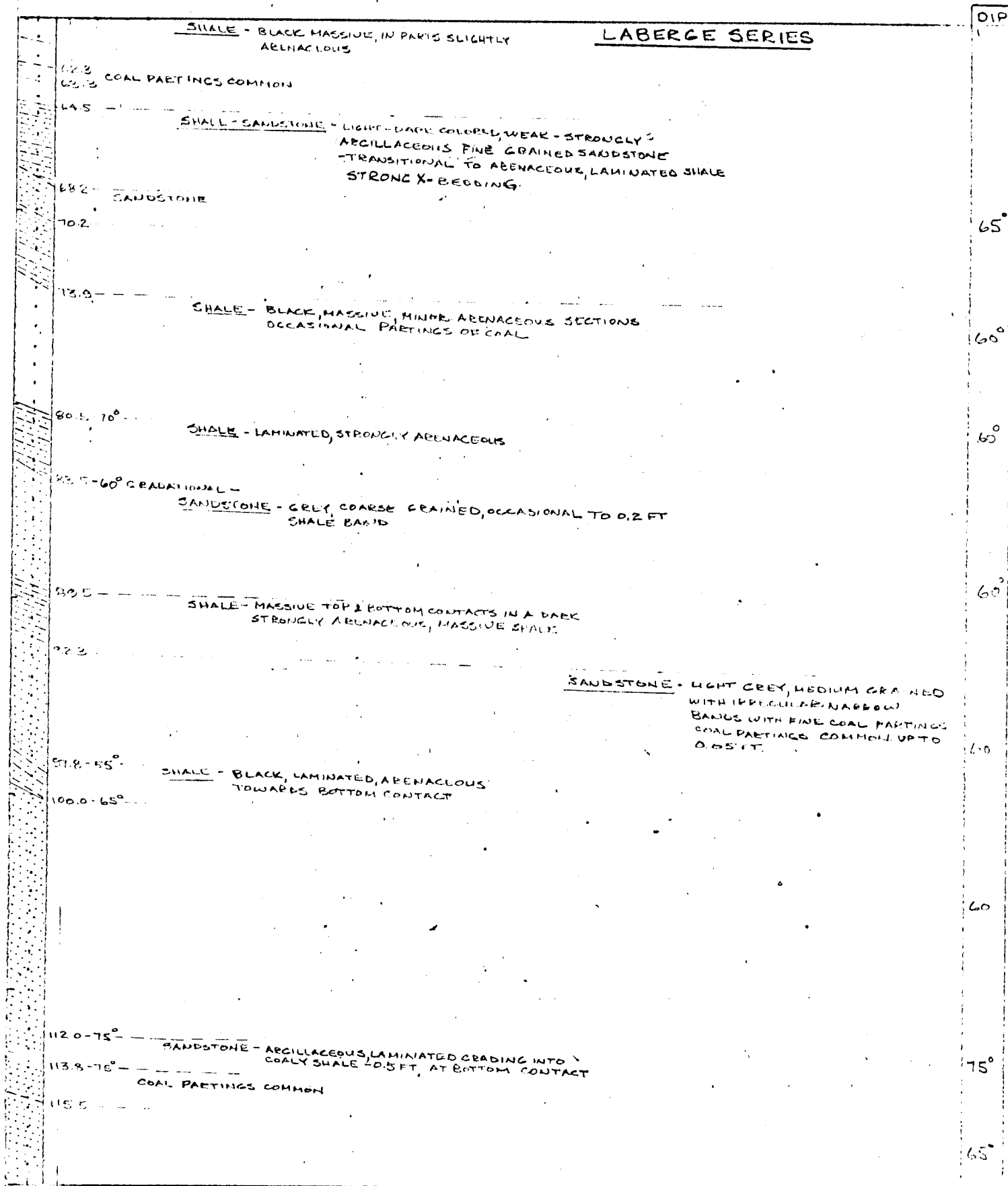
DRILL HOLE LOG.

ARJAY KIRKER RESOURCES LTD
DIVISION MOUNTAIN COAL PROSPECT

COORDINATES :

DIP -

HOLE NO 1
PAGE 2 OF 10



DRILL HOLE LOG

ARJAY KIRKER RESOURCES LTD
DIVISION MOUNTAIN COAL PROSPECT

COORDINATES :

DIP -

HOLE NO 1
PAGE 3 OF 10

LABERGE SERIES

125.0-70° COAL PARTINGS COMMON

126.3- SHALE & COAL - INTERBEDDED
127.0-

127.3-
128.6- COAL-0.4 FT SHALE - ARENACEOUS, WEAKLY LAMINATED, UPPER 2.0 FT.
GRADING INTO BLACK MASSIVE WITH
MINOR ARENACEOUS BANDS.

137.3- SANDSTONE GRLY FINE-MEDIUM GRAINED WITH
COAL PARTINGS

146.0- SANDSTONE - DARK, FINE GRAINED, ARGILLACEOUS
LAMINATED

148.5-55° GRADATIONAL -
SHALE - BLACK MASSIVE, COAL PARTINGS

150.5-60° SHALE - ARENACEOUS, LAMINATED

152.0- GRADATIONAL -
NUMEROUS PARTING OF SHALE, ARGILLACEOUS
BANDS AND COAL PARTINGS

153.3- SANDSTONE

156.4-6 FT STARTS

162.2-55° SHALE - ARENACEOUS, LAMINATED.

163.7-

165.0- SHALE - STRONGLY ARENACEOUS, LAMINATED WITH
BANDS OF FINE GRAINED SANDSTONE
TO A DARK ARENACEOUS, SLIGHTLY LAMINATED

175°-60°-

173.1-60° SHALE - BLACK, MASSIVE

175.2-65° SANDSTONE - PARTINGS SHALE COMMON

176.0- SHALE - BLACK, MASSIVE

DIP

60°

65°

65°

58°

60°

60°

55°

55°

60°

DRILL HOLE LOG

ARJAY KIRKER RESOURCES LTD
DIVISION MOUNTAIN COAL PROSPECT

COORDINATES:

DIP:

HOLE NO 1
PAGE 4 OF 10

SHALE	LABERGE SERIES	DIP
180.8	SANDSTONE - WEAK TO MODERATELY ARGILLACEOUS FAINT BANDS STRONGLY ARGILLACEOUS	70°
186.5 - 45°	SHALE - BLACK, MASSIVE	60°
188.4	SANDSTONE - CAST SHALE COMMON	60°
189.6 - 60°	SHALE - VARIES FROM LIGHT COLORED, STRONGLY ARENACEOUS, WEAKLY LAMINATED TO WEAKLY ARENACEOUS MASSIVE TO DARK MASSIVE. BANDS UP TO 0.5 FT OF SANDSTONE IN CENTER OF COAL - 0.2 FT AT TOP CONTACT	60°
198.1 - 60°	SANDSTONE - COARSE GRAINED	65°
199.8 - 50°	SANDSTONE - FINE GRAINED WITH NARROW BANDS AND PARTINGS OF SHALE, ARGILLACEOUS LAMINATED SANDSTONE	60°
201.9 - 60°	SHALE - BLACK, SLIGHT ARENACEOUS WITH OCCASIONAL LAMINATIONS & NARROW BANDS OF FINE GRAINED, ARGILLACEOUS SLIGHTLY LAMINATED SANDSTONE, OCCASIONAL PARTINGS OF COAL	60°
210.3 - 60°	SANDSTONE - DARK, FINE-MEDIUM GRAINED, MODERATELY ARGILLACEOUS WITH PARTINGS & BANDS OF BLACK ARENACEOUS, LAMINATED SHALE	50°
214.0	SANDSTONE - LIGHT COLORED, ARGILLACEOUS, WEAKLY LAMINATED BECOMING MORE LAMINATED, GRADING TO SHALE TOWARDS GRADATIONAL BOTTOM CONTACT	60°
216.0	SHALE - BLACK, MASSIVE, WEAK LAMINATED ARENACEOUS	60°
219.0 - 60°	SANDSTONE - DARK GREEN, STRONGLY ARGILLACEOUS	60°
224.6 - 60°	SHALE - BLACK MASSIVE	60°
226.0	SANDSTONE - MEDIUM GREY, ARGILLACEOUS PARTINGS	60°
231.0 - 60°	SHALE - BLACK, MASSIVE	60°
231.5	SANDSTONE - STRONG BLACK ARGILLACEOUS	60°
232.7 - 65°	CONTACT 1/2 METER TO BEDDING	60°
HUTSHI GROUP - ANDESITE - DARK GREEN APHANITIC WITH ABUNDANT TO 2MM CHLORITE AND FELDSPAR SPECKLING		60°

DRILL HOLE LOG

ARJAY KIRKER RESOURCES LTD
DIVISION MOUNTAIN COAL PROSPECT

COORDINATES:

DIP:

HOLE NO 1
PAGE 5 OF 10

HUTSHI GROUP - ANDESITE

DIP

252.0 — SHALE - BLACK MASSIVE - HIGHLY BROKEN
253.0 —

258.0 — SHALE - BLACK MASSIVE
258.5 —

271.5 — CONTACT GROUND - 45°
SANDSTONE - 0.3 FT SHALE TOP CONTACT LABERGE SERIES

273.0 — SHALE - BLACK, MASSIVE, HIGHLY BROKEN
COAL PARTINGS OCCASIONALLY
PRESENT

280.0 — COAL BANDS TO 0.2 FT COMMON
281.7 — SHALE - ARENACEOUS, WEAKLY LAMINATED

289.5 — SANDSTONE - LIGHT - DARK Banded GREY, MEDIUM
GRAINED, BLACK SPECKLED
WITH PARTINGS OF COAL

50°

50°

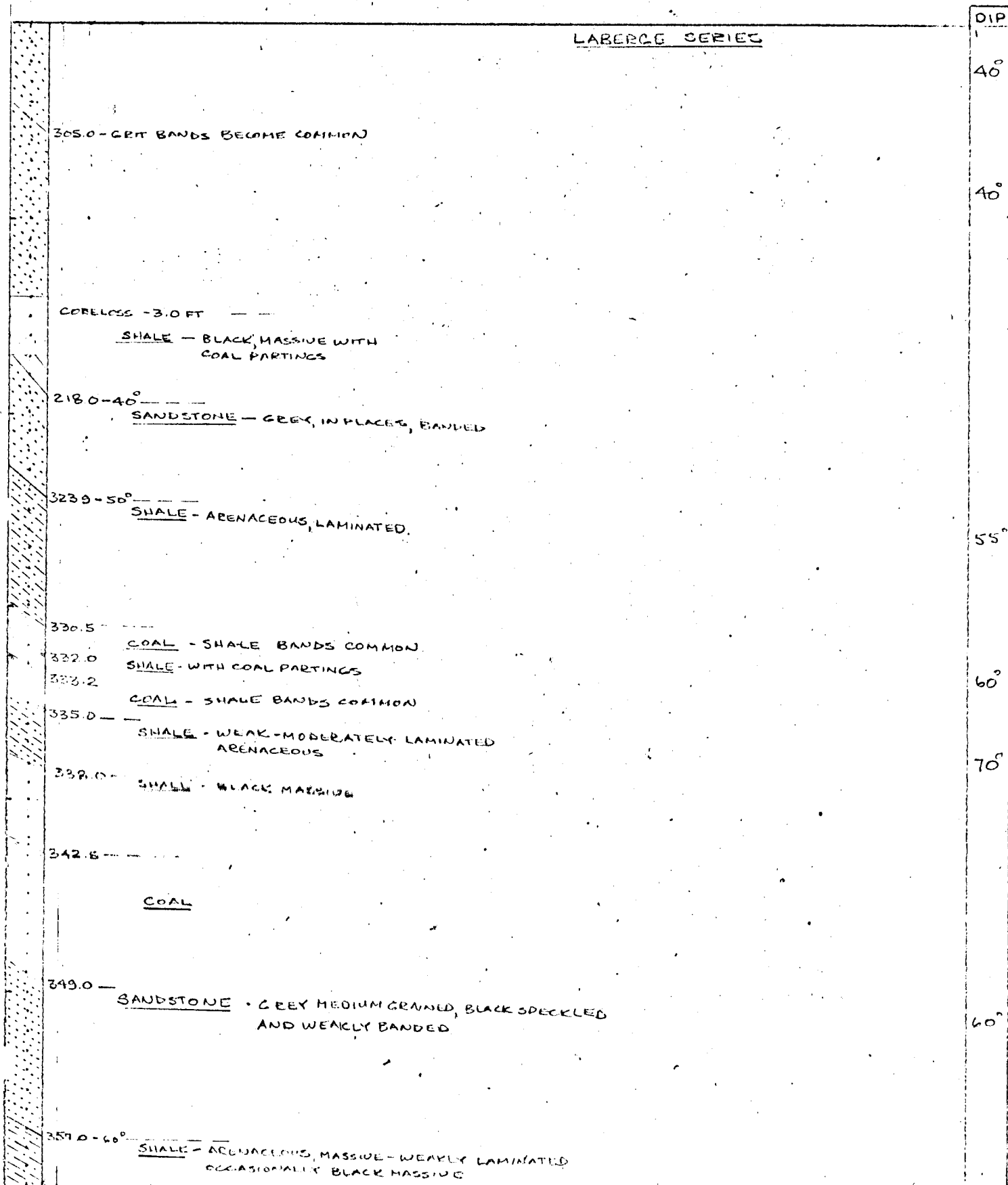
DRILL HOLE LOG

ARJAY KIRKER RESOURCES LTD
DIVISION MOUNTAIN COAL PROSPECT

COORDINATES:

DIP: -

HOLE NO 1
PAGE 6 OF 10



DRILL HOLE LOG

ARJAY KIRKER RESOURCES LTD
DIVISION MOUNTAIN COAL PROSPECT

COORDINATES:

DIP -

HOLE NO 1
 PAGE 7 OF 10

		DIP
	<u>SHALE</u> BANDS UP TO 0.3 FT GREY, WEAK LAMINATED FINE GRAINED SANDSTONE HINDER COAL PARTINGS.	60°
362.6 - 60°	SANDSTONE - GRAY	
362.5 -		
368.5 - 60°	<u>SHALE</u> - MASSIVE, ARENACEOUS	
372.0 - 65°	<u>SANDSTONE</u> - COARSE GRAINED, MODERATELY ARGILLACEOUS	
375.8 -	<u>SHALE</u> - BLACK, MASSIVE, HIGHLY BROKEN	
378.0 -	<u>SANDSTONE</u> - COARSE GRAINED - GRITTY MEDIUM GRAY, MODERATELY ARGILLACEOUS WITH SCATTERED IRREGULAR PEBBLE BANDS - PEBBLES TO 0.1 FT IRREGULAR ARGILLACEOUS BANDS COAL PARTINGS AND LENSES OFTEN PRESENT	60°
		60°
		70°
392.0 -	COAL PARTINGS BECOME COMMON, PEBBLE BANDS AREN'T FINER, GRAINED	60°
395.0 -	<u>SHALE</u> - BLACK MASSIVE	60°
395.5 -		55°
		60°
405.5 - 60°	<u>SHALE</u> - MEDIUM GRAY, STRONGLY ARENACEOUS, WEAKLY BANDED	
407.7 - 60°	<u>GRADATIONAL</u> - <u>SANDSTONE</u> - FINE - COARSE GRAINED, BANDED WITH NARROW GRADATIONAL ARGILLACEOUS LENSING LENSES & PARTING OF COAL.	65°

DRILL HOLE LOG

ARJAY KIRKER RESOURCES LTD
DIVISION MOUNTAIN COAL PROSPECT

COORDINATES :

DIP -

HOLE NO 1
 PAGE 8 OF 10

SANDSTONE	LABERGE SERIES	DIP
422.0 - 45° - <u>COAL</u>		60°
423.8 - <u>SHALE</u> - BLACK, MODERATE - STRONGLY ARENACEOUS, LAMINATED WITH OCCASIONAL TO 0.2 FT SANDSTONE BAND GRADES TO BLACK MASSIVE IN LOWER 2 FT.		60°
432.4 - 70° - <u>SANDSTONE</u>		66°
433.8 - 60° - <u>SHALE</u> - ARENACEOUS, LAMINATED		50°
435.0 - <u>SHALE</u> - BLACK, MASSIVE WITH COAL BANDS TO 0.5 FT		60°
437.2 - 60° - <u>SANDSTONE</u> - GRLY, FINE GRAINED TO GRITY WITH ARGILLACEOUS BANDING AND OCCASIONAL NARROW BLACK SHALE BANDS. SANDSTONE X-BEDDED		60°
449.0 - 70° - GRADATIONAL <u>SHALE</u> - LIGHT COLORED, STRONGLY ARENACEOUS LAMINATED, MASSIVE BLACK TOWARDS BOTTOM CONTACT		60°
454.3 - 60° - <u>SANDSTONE</u>		60°
457.0 - 55° - GRADATIONAL <u>SHALE</u> - LIGHT COLORED, STRONGLY ARENACEOUS LAMINATED		60°
459.0 - 459.3 - <u>BLACK SHALE</u> - 0.3 FT <u>SANDSTONE</u> - LIGHT GRLY, MASSIVE		60°
463.0 - 65° - <u>SHALE</u> - BLACK MASSIVE		60°
465.8 - 60° - <u>SHALE</u> - BLACK MASSIVE		60°
467.6 - 03 - <u>SHALE</u> - ARENACEOUS, LAMINATED		60°
470.2 - 70° - <u>SHALE</u> - ARENACEOUS, LAMINATED		60°
472.0 - 70° -		
474.1 - 475.0 - <u>SHALE</u> - BLACK, SLIGHTLY LAMINATED		
476.0 - <u>SANDSTONE</u> - DARK, STRONG ARGILLACEOUS, BLACK SPECKLING		
477.0 - ANDESITE - 0.3 FT. <u>SHALE</u> - BLACK, MASSIVE TO ARENACEOUS LAMINATED WITH BANDS UP TO 0.5 FT OF COAL - HIGHLY BROWN		

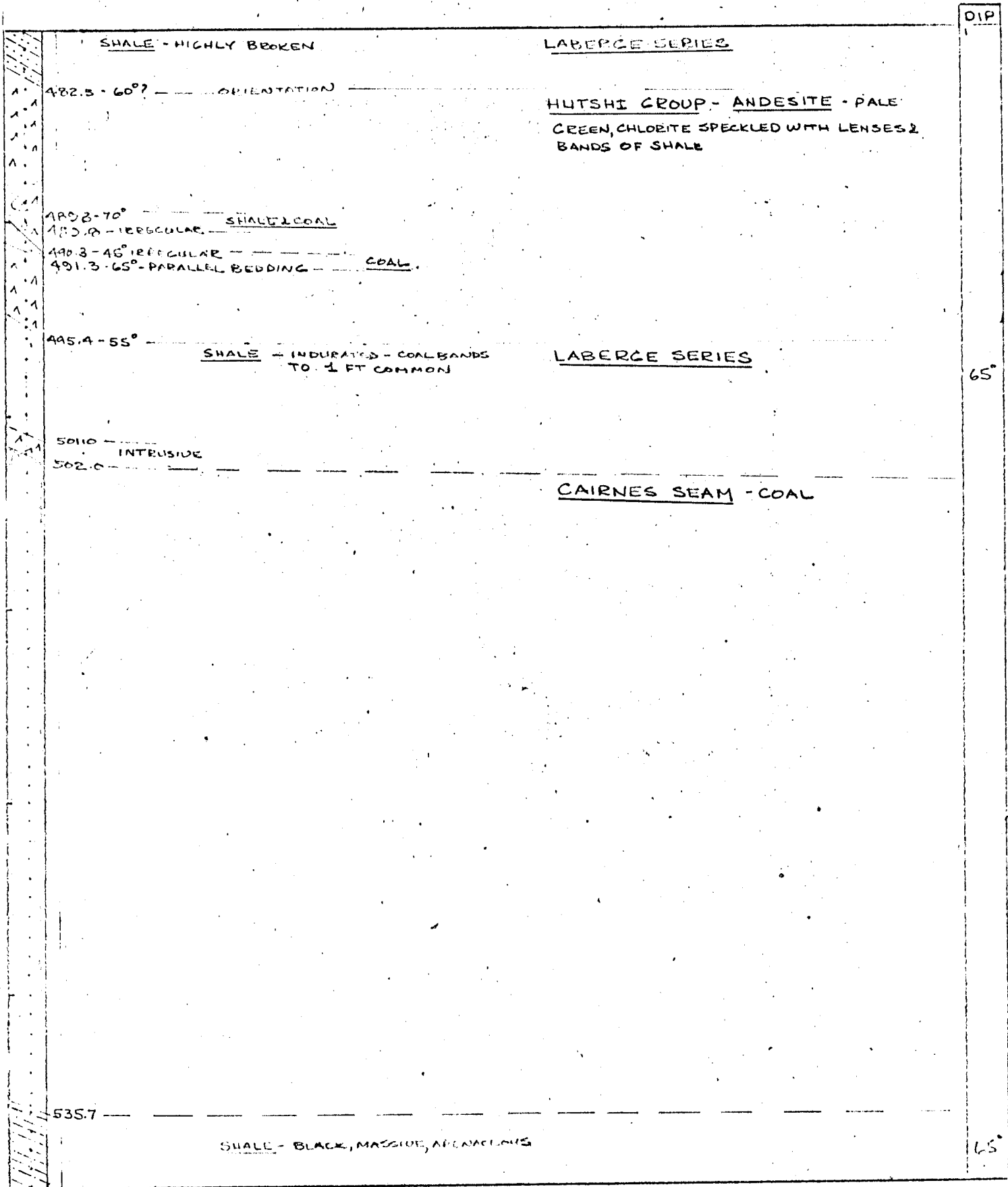
DRILL HOLE LOG

ARJAY KIRKER RESOURCES LTD
DIVISION MOUNTAIN COAL PROSPECT

COORDINATES:

DIP -

HOLE NO 1
PAGE 9 OF 10



DRILL HOLE LOG

ARJAY KIRKER RESOURCES LTD
DIVISION MOUNTAIN COAL PROSPECT

COORDINATES :

DIP -

HOLE NO 1
PAGE 10 OF 10

LABERGE SERIES

546.0 - 60° - SANDSTONE - LIGHT - DARK BANDED TO LAMINATED
ARGILLACEOUS, FINE GRAINED
SANDSTONE

553.0 - BRECCIA ZONE - 0.2 FT.

553.3 - 0-20° IRREGULAR CONTACT - ORIENTATION PARALLEL TO BEDDING

HUTSHI GROUP - ANDESITE

DARK GREEN WITH FINE QUARTZ,
FELDSPAR PHENOCRYSTS. STEEP
DIPPING QUARTZ, CARBONATE, FELDSPAR
FILLED FRACTURES COMMON

565.6 - 10° - CHILLED - ORIENTATION?

SANDSTONE - COARSE GRAINED - GRITTY
WITH BLACK SPECKLING

LABERGE SERIES

572.6 - 45° - SHALE - MASSIVE, STRONGLY ARENACEOUS
WITH SANDSTONE BANDS

574.0 - 70° - GRADATIONAL
SANDSTONE - AS PREVIOUS

578.8 - 45° - COAL -

585.5 - SHALE - BLACK MASSIVE

586.0 - SHALE - LAMINATED, ARENACEOUS

587.5 - GRADATIONAL

SANDSTONE LIGHT GREY - FINE GRAINED - GRITTY
WEAK - MODERATELY ARGILLACEOUS, BANDED

600.0 - END OF HOLE

DIP

60°

60°

60°